

2026 Federal Certification Review

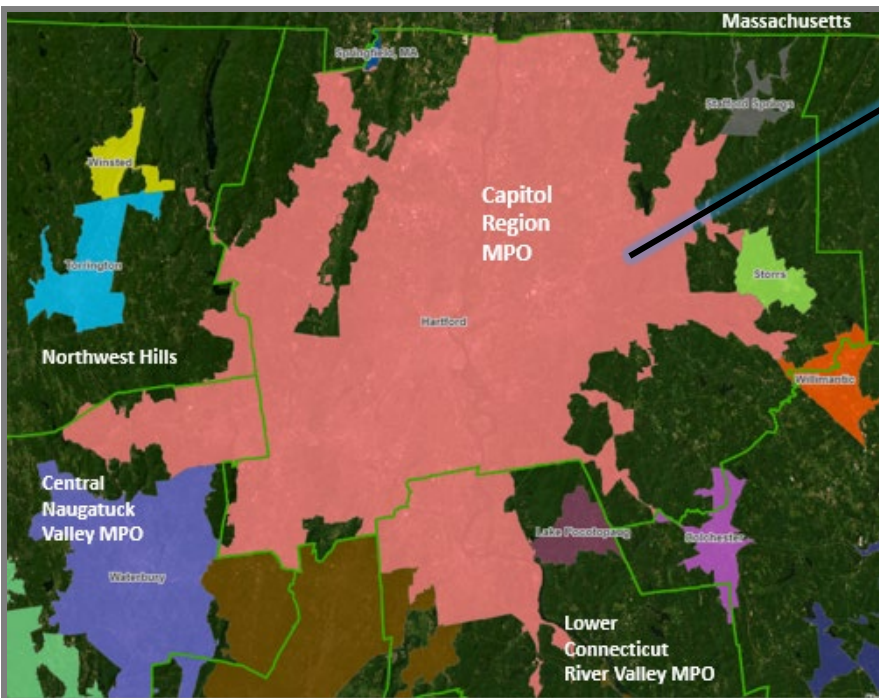
Capitol Region Metropolitan Planning Organization

Hartford Transportation Management Area

Overview

At least once every four years, the U.S. Department of Transportation (DOT) must certify that a metropolitan planning organization (MPO) serving a Transportation Management Area (TMA) – an urbanized area with a population over 200,000 – is carrying out the metropolitan transportation planning process in adherence with federal requirements under [23 U.S.C. 134](#) and [49 U.S.C. 5303](#). The Federal Highway Administration (FHWA) and Federal Transit Administration (FTA) jointly conduct this review, make a certification determination, and produce a report that may include compliance issues (corrective actions), areas for improvement (recommendations), and/or notable practices (commendations). Based on these findings, the MPO will either be “certified,” “certified with conditions or restrictions,” or “not certified”.

Hartford TMA



Primarily Served by:

- Capitol Region MPO
- Central Naugatuck Valley MPO
- Lower CT River Valley MPO
- Northwest Hills COG

Comprised of:



Metropolitan Transportation Planning Process

A **continuous, cooperative, and comprehensive** (3-C) process that informs transportation decisions, including how projects are selected and prioritized for implementation within a region.

With limited funds, this is critical for prioritizing regional needs and identifying projects that best meet performance goals and objectives while providing public benefit. The process assists in developing a framework for the future transportation system.

3-C Planning Process

Continuous: Regularly addressing short-term needs and long-term regional goals

Cooperative: Involving all interested parties through a public participation process

Comprehensive: Multimodal in scope and consistent with other regional and statewide planning products and federal planning factors

Four Key MPO Planning Documents

Please note that there are other federal requirements applicable to MPOs, these are four core planning documents that frame the metropolitan transportation planning process.

Public Participation Plan (PPP)

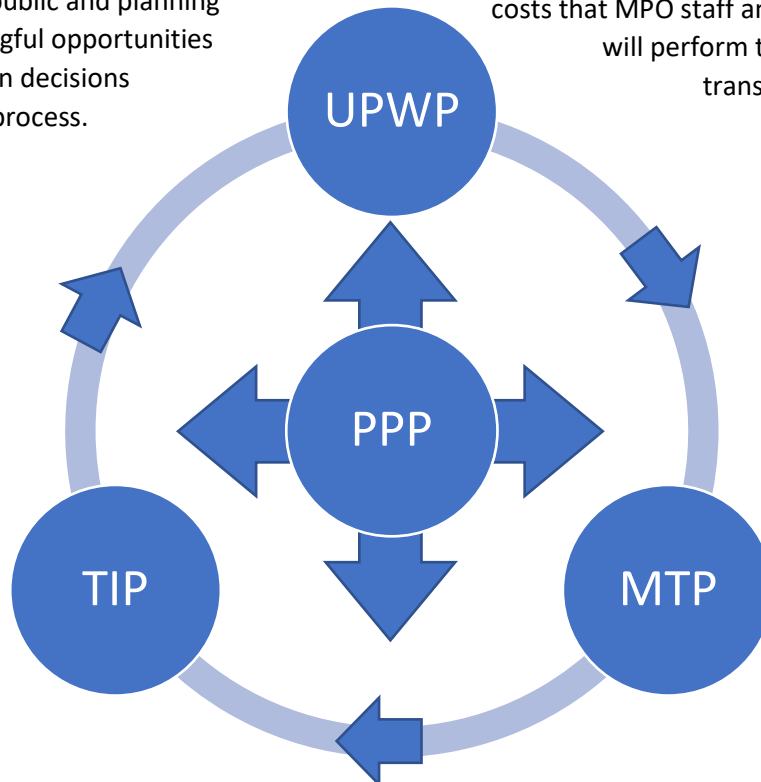
Documents public involvement strategies that provide the general public and planning stakeholders with meaningful opportunities to influence transportation decisions throughout the planning process.

Updated as needed

Unified Planning Work Program (UPWP)

Lists transportation tasks, products, and associated costs that MPO staff and other responsible parties will perform to support the metropolitan transportation planning process.

Updated biennially



Transportation Improvement Program (TIP)

Identifies transportation investments, and associated costs, by year for implementation in the region over the next 4 years. Projects reflect investment priorities from the MTP and activities from the UPWP.

Updated regularly; New TIP prepared every 2-3 years

Metropolitan Transportation Plan (MTP)

Establishes regional goals, strategies, projects, and priorities for an integrated intermodal transportation system that reflect current and future demand over at least 20 years.

Updated every four years

Things to Think About...

What are your views on the planning process?

- What are some challenges?
- What are some strengths?

Do you feel you understand how the planning process works and how to get involved?

Do you feel like you have adequate opportunities to participate and be heard?

How is the Process Going? We Want Your Input!

Written comments can be submitted by 11/21/2025 to:

FHWA: Jennifer Brady, P.E., Transportation Specialist
jennifer.brady@dot.gov or
450 Main Street, Suite 612; Hartford, CT 06103

FTA: Brandon Burns, Acting Director Planning & Program Development; FTA Region 1
michael.burns1@dot.gov or
220 Binney Street, 9th Floor; Cambridge, MA 02142