

PRIORITY PATHWAYS

Advisory Committee Meeting #4

October 8, 2025



Agenda



- **Welcome/Lunch** (10 min)
- **Community Engagement Updates** (25 min)
 - Pop-ups Summary
 - Ambassador Walk Audits
 - CTDOT Active Transportation Study
- **Draft Network** (30 min)
- **Implementation and Grant Strategies** (20 min)
- **Next Steps** (5 min)

Recap: June 3 AC Meeting

- Summary of Existing Conditions
- Network Gaps
- Community Engagement Updates





Community Engagement Updates

Community Engagement Updates

Pop-up Summary

Ambassador Walk Audits

CTDOT Active Transportation Survey Results

Draft Network

Implementation and Grant Strategies

Next Steps

Completed Pop-Ups

May 10 Parkville Market, Hartford

May 27 Bicycles on Main, Wethersfield

June 8 Trails Day in Vernon and Farmington

June 24 Juneteenth, Bloomfield

July 2 Indian Notch Park, Bolton

July 13 Coventry Farmer's Market

July 17 Off Main Experience, Manchester

August 2 Taste of the Caribbean, Hartford



Pop-Up Summaries



After speaking with over 400 individuals at farmer's markets, community events, festivals, and on trails, people enjoy walking and biking in their neighborhood, but would like safer connections to access destinations such as their municipality's downtowns and trailheads.

Pop-Up Summaries



When biking and walking, people are traveling around their neighborhood and along the **greenways and trails**. A few will bike or walk to **visit friends** or to **community events**.

Pop-Up Summaries



Pedestrians and bicyclists are concerned about motorists speeding and distracted or aggressive driving. **Safer crossing locations**, and **better separation between vehicles and bicycles** to encourage people to walk, bike, or roll.

Pop-Up Summaries



People are primarily biking and walking for exercise and to be outside.

Ambassador Walk Audits

Completed

June 3, 2025

Advisory Committee

Hartford near CRCOG office

June 24, 2025

Town of Windsor and

Business Owners

Windsor Federal Credit Union,
Day Hill Road

August 18, 2025

Town of Berlin and

Business Owners

Provision State Coffee, Berlin

October 7, 2025

Town of Hebron

Horton House

Upcoming

October 14, 2025

**Hartford, Newington, New
Britain and West Hartford**

Elmwood Community Center

CTDOT Active Transportation Plan

- Survey conducted and promoted by CTDOT
- Open for 6 months: 10/2024 – 3/2025
- CT-wide survey respondents, but analysis conducted for residents of CRCOG communities
- 114 responses analyzed

Statewide Active Transportation Plan

CONNECTICUT



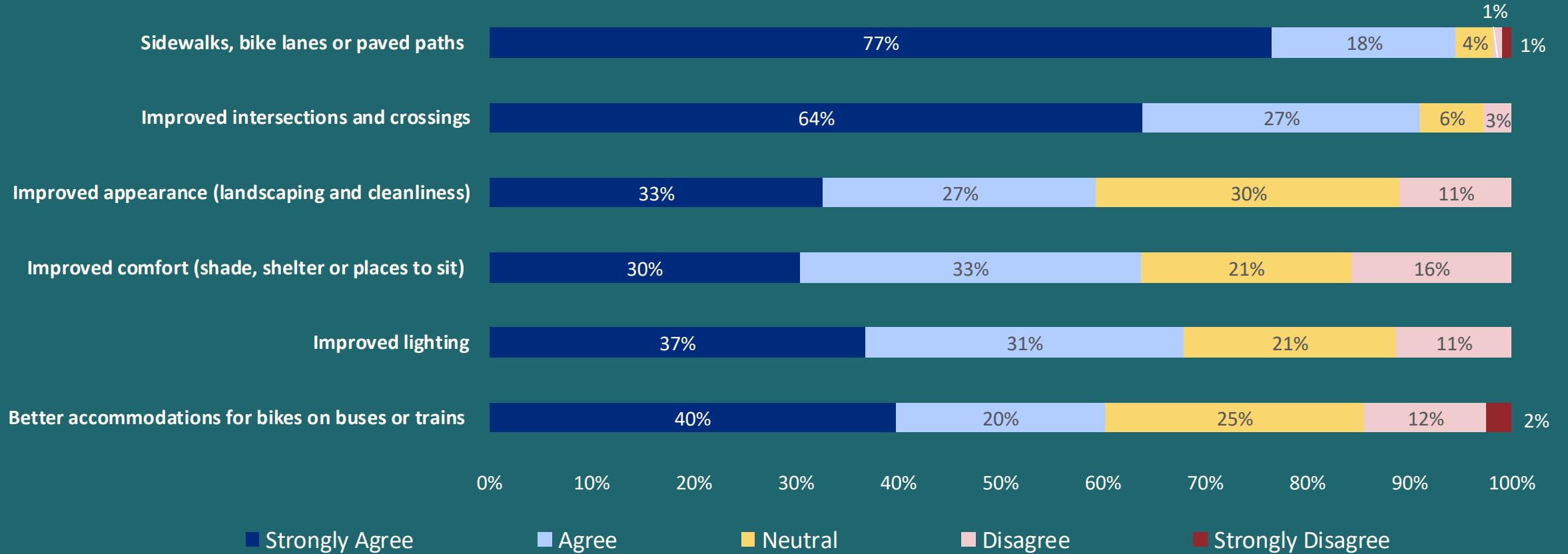
Active Transportation Plan

Improving lives through transportation

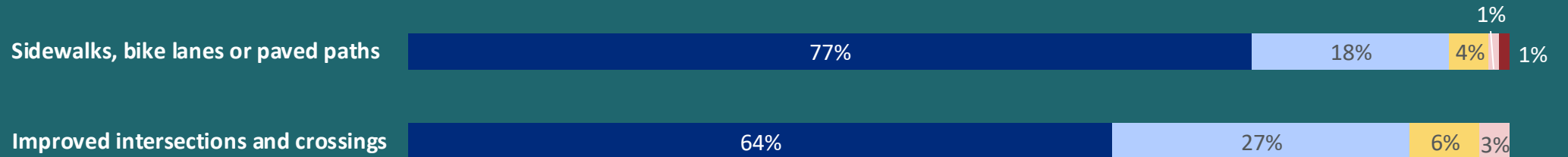
The Connecticut Department of Transportation (CTDOT) is developing a new Statewide Active Transportation Plan (ATP). The ATP will help CTDOT fulfill their mission of **Improving lives through transportation**.

The ATP will guide future improvements on state routes for a functional, equitable, and safety-focused active transportation network and recommend supportive programs and policies. The ATP will serve as a strategic roadmap for developing and modernizing sidewalks, bike lanes, paved trails, and intersection improvements on or along state routes to make it safer and more comfortable to walk, bike, use a wheelchair/mobility aid device or human-scaled electronic mobility devices.

Amenities and infrastructure that would encourage respondents to walk, bike, or roll more often



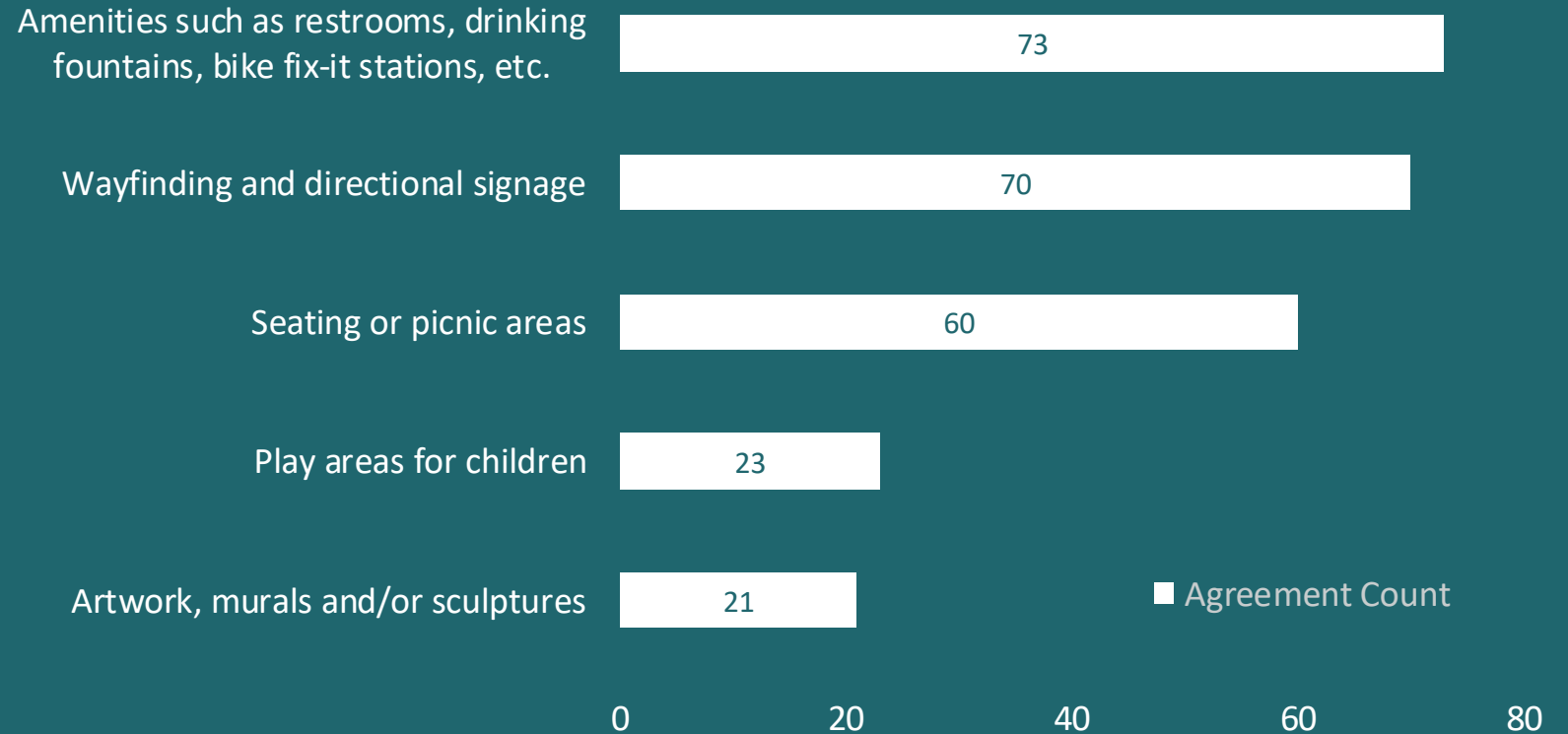
Amenities and infrastructure that would encourage respondents to walk, bike, or roll more often



Over 90% of respondents agree that **sidewalks/bike lanes** and **improved intersections/crossings** would encourage them to travel by walking, rolling, or biking

Preferred features to include in a bike and pedestrian network

Respondents are **most interested in amenities (73)** and **wayfinding signage (70)**, followed closely with **seating areas.**



Key Takeaways from the Survey



Respondents are **most comfortable** biking in a shared use path or bike lane (82%).



24% of survey respondents said they bike at least **1x a week or more**.



Recreation/leisure and **health/fitness** are the primary reasons for walking and biking in the region.



28% of respondents said they **walk to work/school** at least **1x a week** and **19% walk** several times per month.



Over **70%** of survey respondents indicated they **walk 1x a week or more**.



Driver behavior/traffic is the **top concern** and deterrent for walking or biking more in the region.



Draft Network

Community Engagement Updates

Pop-up Summary

Ambassador Walk Audits

CTDOT Active Transportation Survey results

Draft Network

Implementation and Grant Strategies

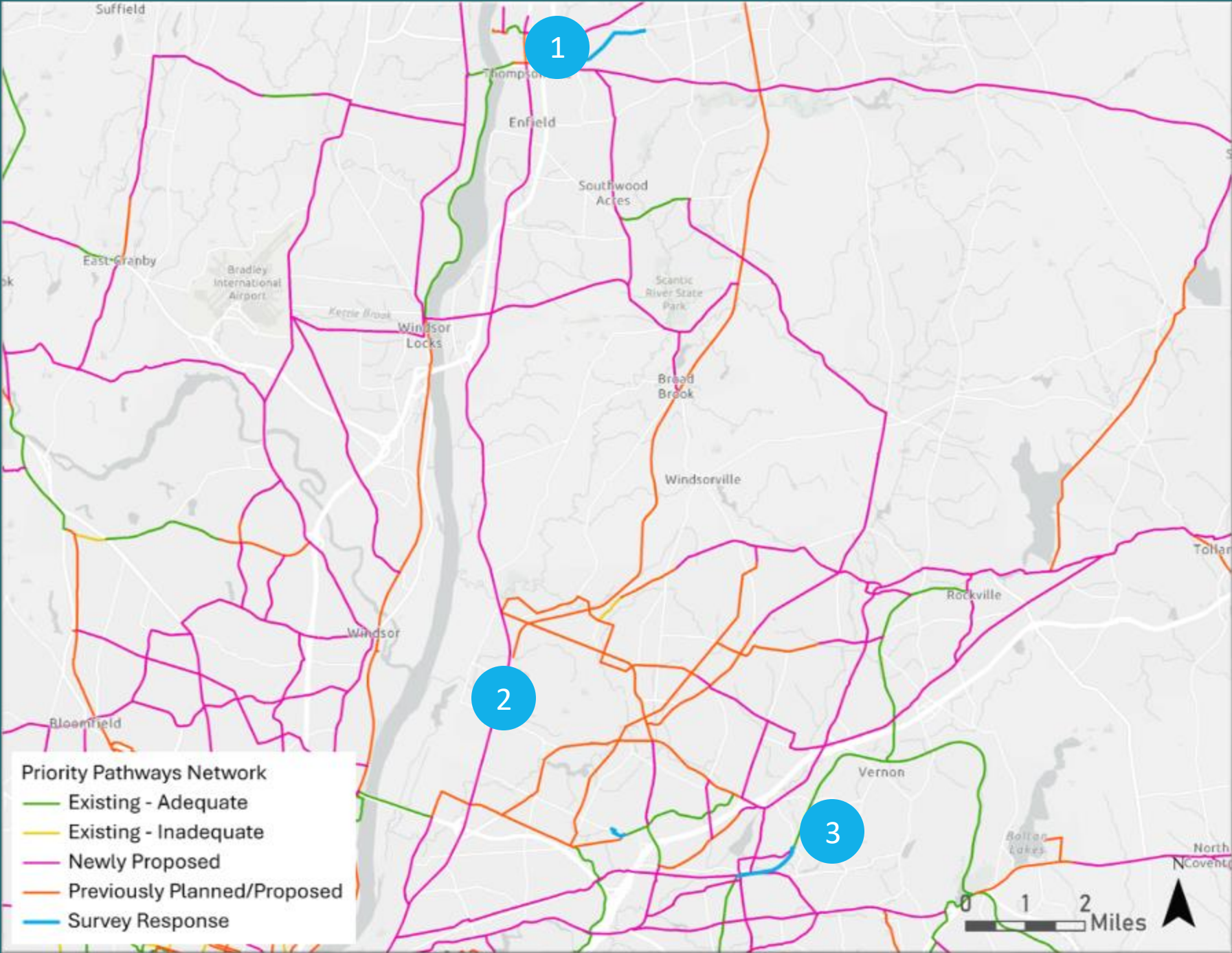
Next Steps

Role of the Draft Network

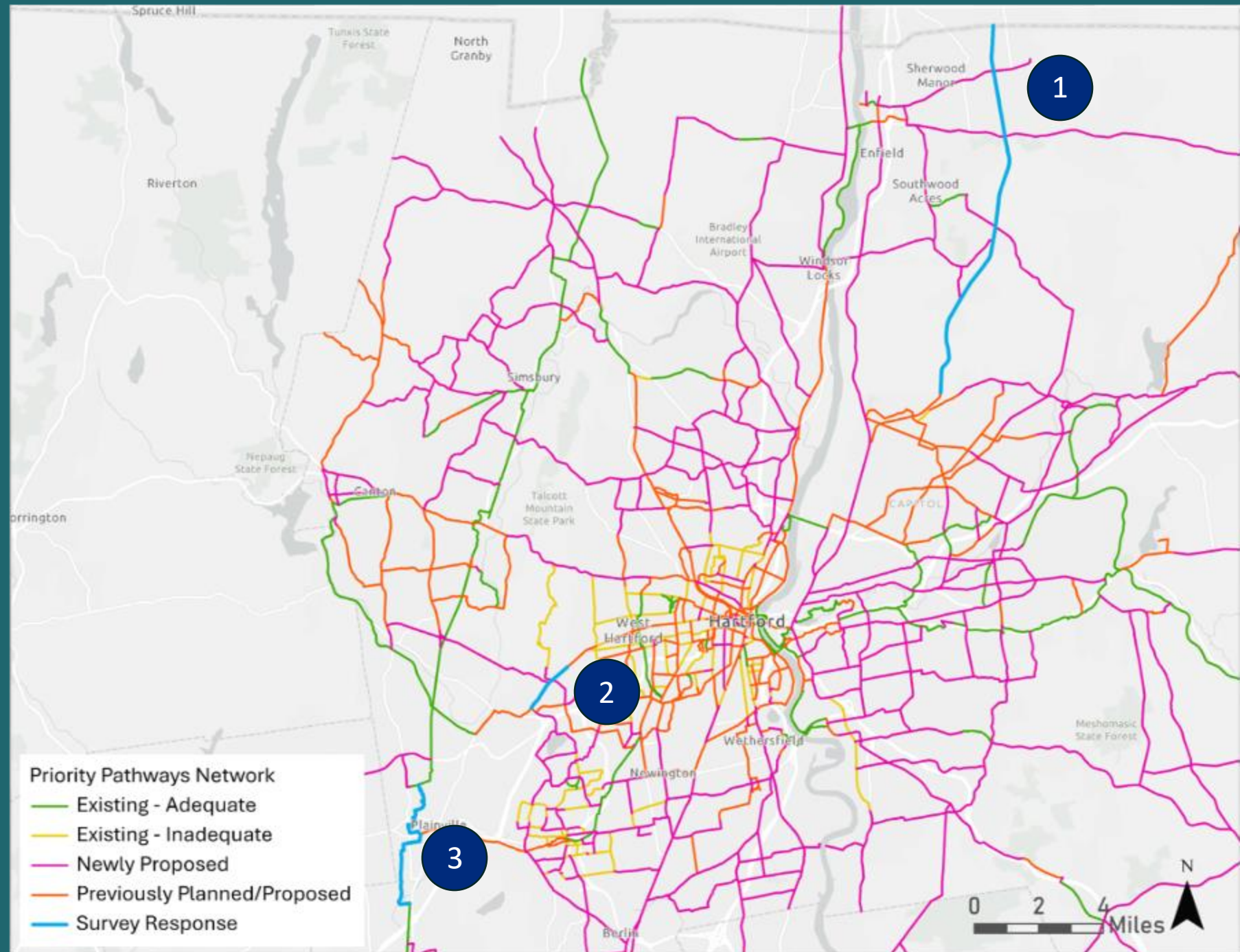
- Promote a **regional** network appropriate for people of all ages and abilities
- Align planning with a shared vision
 - Target investments in active transportation



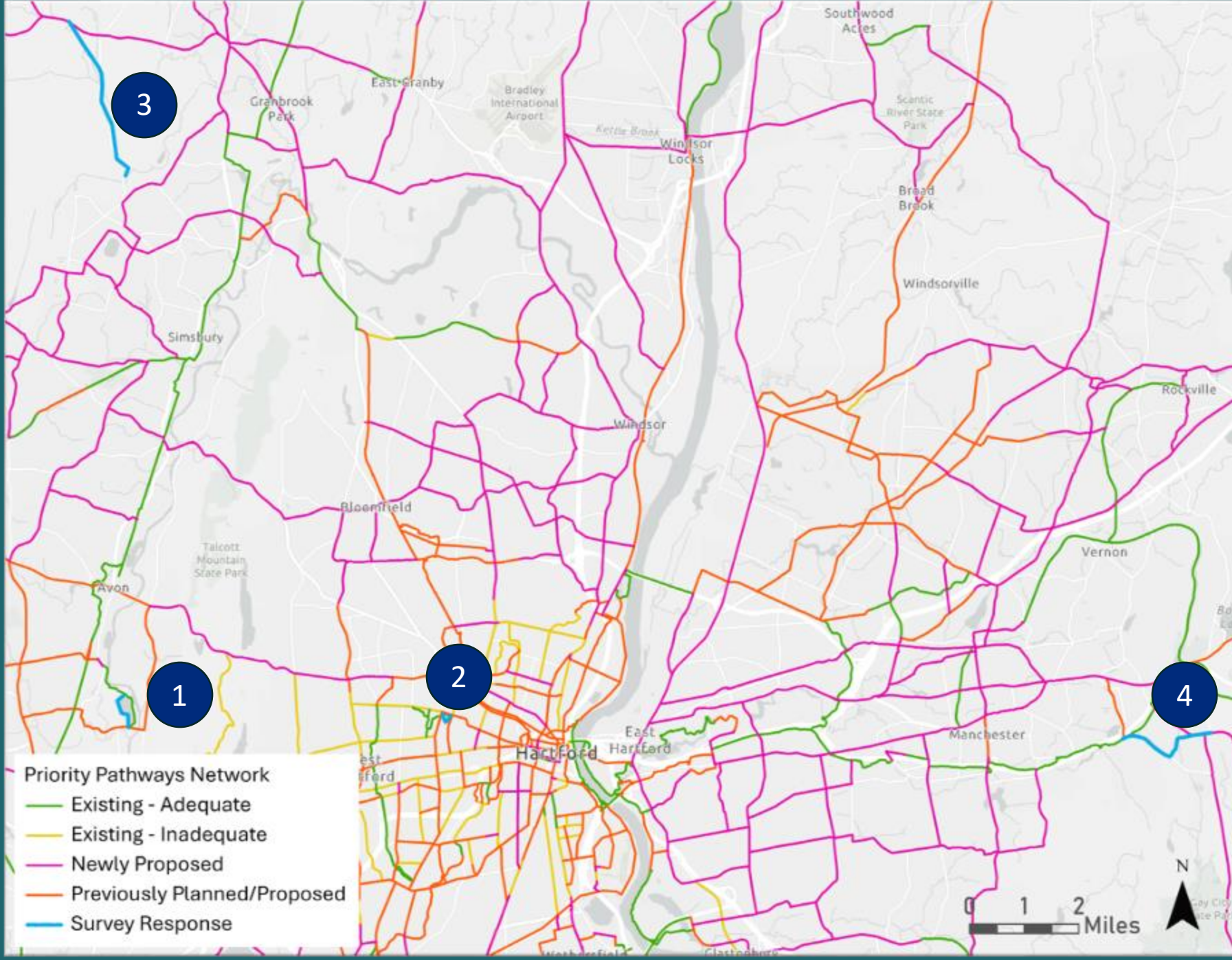
New Alignments



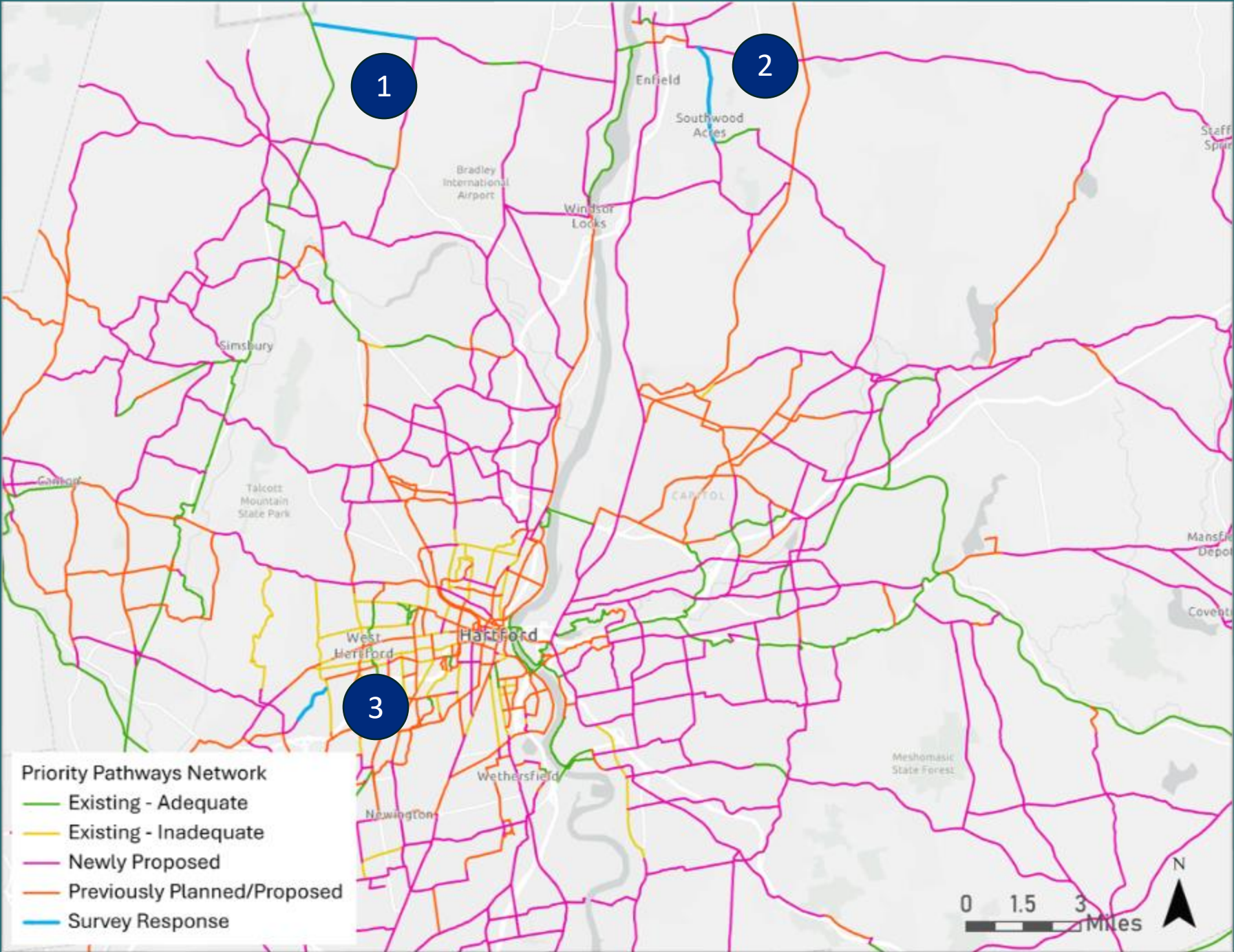
Support



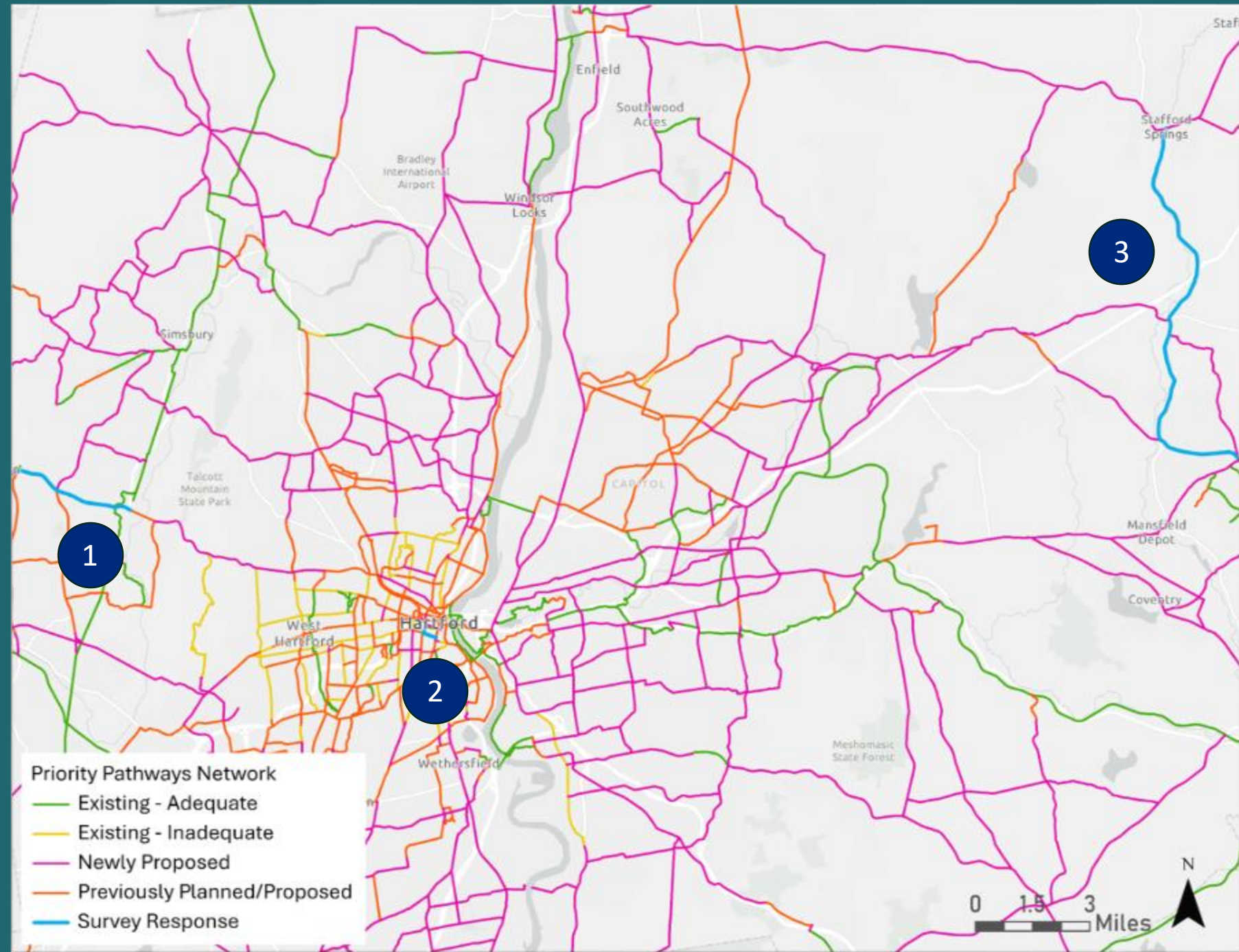
Alternatives



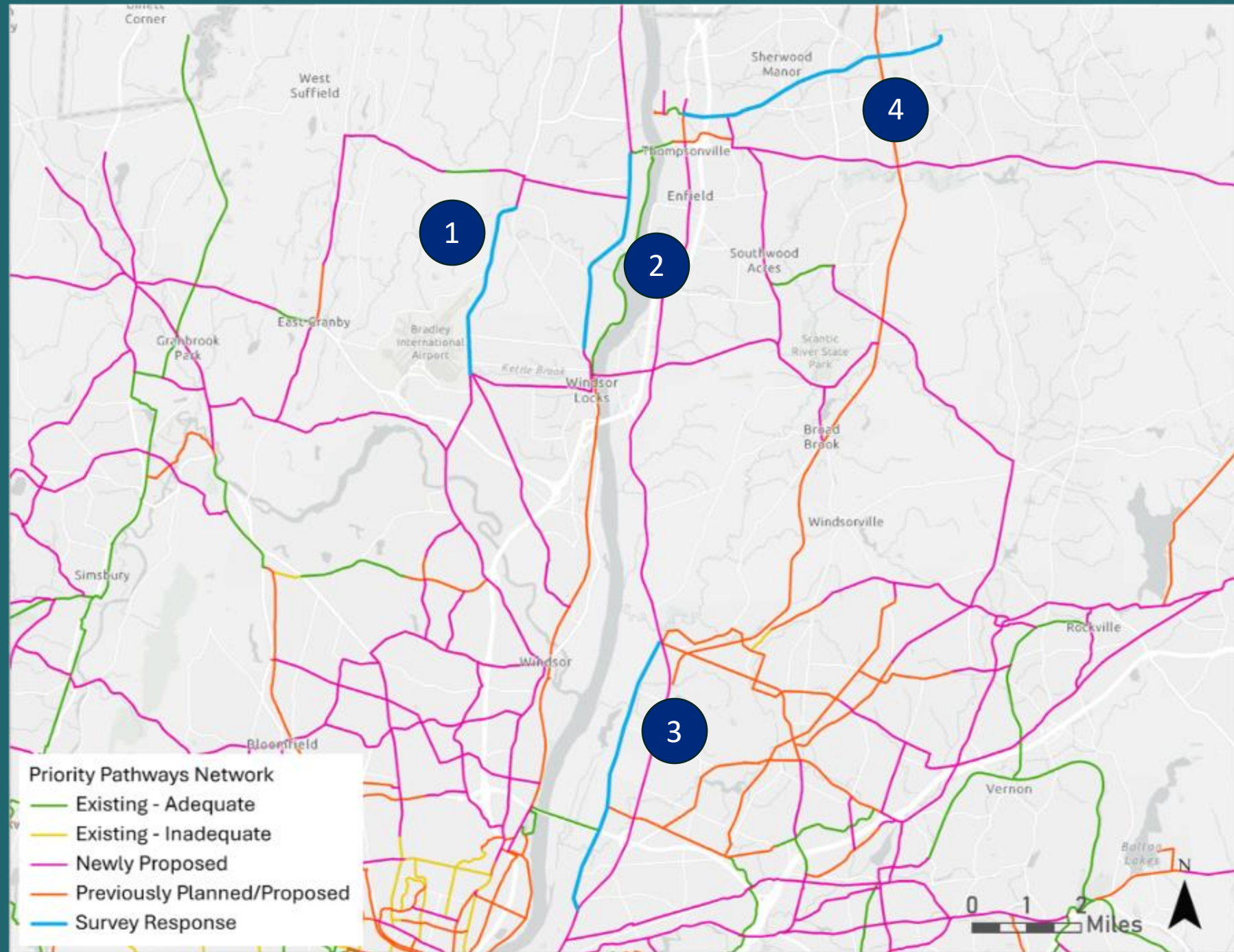
Connections



Existing Conditions



Feasibility



Next Steps

- Address comments and revise network based on feedback collected
- Score segments based on short trip potential and demographics
- Prune network to focus recommendations on regional connectivity





Implementation and Grant Strategies

Community Engagement Updates

Pop-up Summary

Ambassador Walk Audits

CTDOT Active Transportation Survey results

Draft Network

Implementation and Grant Strategies

Next Steps

Funding Strategies Overview

Federal

- Active Transportation Infrastructure Investment Program
- Better Utilizing Investments to Leverage Development
- Carbon Reduction Program
- Community Project Funding
- Congestion Mitigation and Air Quality Program
- Highway Safety Improvement Program
- Rural Surface Transportation Grant
- Safe Streets and Roads for All
- Transportation Alternatives Program
- Surface Transportation Block Grant

State

- Community Connectivity Grant Program
- Complete Streets/Bonding Funds
- Land and Water Conservation Fund
- Local Capital Improvement Program
- Recreational Trails Program
- Small Town Economic Assistance Program
- Transportation Rural Improvement Program
- CTDOT Active Transportation Microgrant

Philanthropic

- AARP Community Challenge
- America Walks Community Change Grants
- Conservation Fund/ Open Space Institutes
- Hospital Community Benefit Funds
- Greater Together Community Fund
- PeopleForBikes Community Grants
- Thriving Neighborhoods Grant
- Rails-to-Trails Conservancy Grants
- ZEST TA

What others should be included?

Federal Grant Strategies

Grant Name	Description	Focus Area	Funding \$	Website
Active Transportation Infrastructure Investment Program (ATIIP)	Provides planning and construction grants to build safe, accessible, and connected active transportation networks.	Must enhance safety, equity, and mobility for non-motorized users	\$100,000+	https://www.transportation.gov/rural/grant-toolkit/active-transportation-infrastructure-investment-program-atiip
BUILD (formerly known as RAISE)	Funding infrastructure projects of regional or national significance, with a focus on safety, sustainability, and equity.	Must demonstrate significant community benefit.	Up to \$25 million per project	https://www.transportation.gov/BUILDgrants
Carbon Reduction Program (CRP)	Formula-based funding to reduce on-road carbon emissions through trail, bike/ped, and transit improvements.	Must show emissions reduction potential.	CT receives ~\$79 million	https://www.fhwa.dot.gov/infrastructure-investment-and-jobs-act/crp_fact_sheet.cfm
Community Project Funding (CPF)	Federal earmark process that allocates funds to specific community projects via congressional offices.	Projects must demonstrate community support and be included in a member's CPF request.	Varies	https://www.transit.dot.gov/grant-programs/community-project-fundingcongressionally-directed-spending
Surface Transportation Block Grant (STBG)	It supports a wide range of projects, including highway and bridge preservation, pedestrian and bicycle infrastructure, and transit capital investments.	Must be included in the Statewide or Metropolitan Transportation Improvement Program.	Varies	https://www.fhwa.dot.gov/specialfunding/stp/

Federal Grant Strategies

Grant Name	Description	Focus Area	Funding \$	Website
CMAQ (Congestion Mitigation and Air Quality Program)	FHWA program supporting transportation projects that reduce air pollution and traffic congestion.	Projects must be in eligible air quality areas and demonstrate emissions benefits.	Suballocated through state DOTs and MPOs	https://www.fhwa.dot.gov/infrastructure-investment-and-jobs-act/cmaq.cfm
Highway Safety Improvement Program (HSIP)	A federal-aid program focused on reducing fatalities and serious injuries through data-driven infrastructure improvements.	Projects must align with the state's Strategic Highway Safety Plan (SHSP) and be supported by crash data.	Varies	https://highways.dot.gov/safety/hsip
Rural Surface Transportation Grant (RSTG)	USDOT discretionary program funding rural infrastructure improvements, including roadways, bridges, and multimodal projects.	Projects must enhance rural connectivity, safety, and economic growth.	Up to \$25M per project	https://www.transportation.gov/grants/rural-surface-transportation-grant-program
SS4A – Safe Streets and Roads for All	USDOT program funding safety action planning and implementation projects aimed at eliminating roadway fatalities	Implementation grants require an adopted Safety Action Plan.	Planning: up to \$1M Implem: \$2 to \$10M	https://www.transportation.gov/grants/SS4A
Transportation Alternatives Program (TAP)	Federal funding source for community-based active transportation projects, such as sidewalks, trails, and Safe Routes to School.	Projects must improve pedestrian or bicycle access and safety.	Varies	https://www.fhwa.dot.gov/environment/transportation_alternatives/

State Grant Strategies

Grant Name	Description	Focus Area	Funding \$	Website
Community Connectivity Grant Program (CCGP)	A CTDOT program supporting pedestrian and bicyclist safety in town centers and community hubs.	Projects must address safety, connectivity, and accessibility.	Up to \$800K	https://portal.ct.gov/dot/programs/ccgp?language=en_US
Complete Streets / Bonding Funds	State or local bond programs used to fund infrastructure such as sidewalks, bike lanes, and traffic calming.	Typically requires town council or legislative approval.	Based on bond capacity	https://portal.ct.gov/OPM/Bud-Capital-Budget/Current/State_Bond_Commission_Home
Land and Water Conservation Fund (LWCF)	Federal matching grant program supporting the acquisition and development of public outdoor recreation areas such as trails, parks, and open spaces.	Projects must be consistent with state outdoor recreation plans and provide public access.	\$100K - \$1M	https://portal.ct.gov/deep/open-space/land-and-water-conservation-fund-grant-program
Local Capital Improvement Program (LOTICIP)	Connecticut's state-funded program supporting municipal capital improvements including roads, parks, public buildings, and drainage systems.	Projects must be listed in the town's Capital Improvement Plan (CIP) or authorized under emergency declarations.	Varies	https://portal.ct.gov/opm/igpp/grants/locip/local-capital-improvement-program-locip

State Grant Strategies

Grant Name	Description	Focus Area	Funding \$	Website
Recreational Trails Program (RTP)	Federal grant program administered by CT DEEP that funds trail construction, maintenance, and planning.	Projects must support multi-use or nonmotorized trails.	\$50K-\$300K	https://portal.ct.gov/deep/outdoor-recreation/trails/crt--funding
Small Town Economic Assistance Program (STEAP)	State funding that provides grants to small towns for economic development and infrastructure improvements	Focus on small towns	Varies	https://portal.ct.gov/opm/igpp/grants/steap/small-town-economic-assistance-program---steap
Transportation Rural Improvement Program (TRIP)	State funding to rural municipalities for transportation capital projects	Municipalities with greater than or equal to fifty percent of their population living in rural areas	\$300k-\$2M	https://portal.ct.gov/dot/programs/trip?language=en_US
Active Transportation Microgrant (CTDOT)	Provides small grants to support non-infrastructure projects that enhance safety, equity, and accessibility for walking, biking, and rolling in Connecticut communities.	Projects must be for eligible items that improve conditions for non-motorized users.	Up to \$5K	https://portal.ct.gov/dot/programs/saferoutes/active-transportation-microgrant

Philanthropic Grant Strategies

Grant Name	Description	Focus Area	Funding \$	Website
AARP Community Challenge	AARP's quick-action grant program funds small-scale, high-impact projects that improve livability, particularly for older adults.	Projects must be completed within months and focus on walkability, housing, transportation, or public spaces.	\$5K-\$25K	https://www.aarp.org/livable-communities/community-challenge/
America Walks Community Change Grants	Microgrants to support community-led initiatives that promote walkability, safety, and active transportation.	Projects must support local walking conditions and community engagement.	\$1.5K	americawalks.org
Conservation Fund/Open Space Institutes	Private organizations offering grants and low-cost loans to support land conservation and climate resilience.	Projects must focus on habitat, greenways, or climate adaptation.	\$50K-\$1M	https://www.openspaceinstitute.org/how/funding
Hospital Community Benefit Funds	These funds often support projects that address social determinants of health such as transportation, equity, and safety.	Community-based organizations and municipal initiatives that align with a hospital's Community Health Needs Assessment.	Varies	https://portal.ct.gov/ohs/programs-and-initiatives/hospital-community-benefit?language=en_US
Zoning for Equitable Solutions and Thriving Communities (ZEST TA)	Provides technical assistance, capacity building, and peer learning support to community-based organizations seeking to advance equitable zoning and land use reforms	Participating organizations commit to developing zoning reform strategies, conducting policy analysis, and engaging in shared learning within the national cohort.	Varies	https://www.smartgrowthamerica.org/knowledge-hub/news/announcing-the-zoning-for-equitable-solutions-and-thriving-communities-zest-ta-cohort

Philanthropic Grant Strategies

Grant Name	Description	Focus Area	Funding \$	Website
PeopleForBikes Community Grants	Supports infrastructure and education projects that make bicycling safer and more accessible.	Must focus on bike infrastructure, access, or community engagement	Up to \$10K	https://www.peopleforbikes.org/grants
Thriving Neighborhoods Grant - Hartford Foundation for Public Giving	Regional philanthropic foundation that focuses on increasing the strength and connectedness within Hartford neighborhoods and improve community assets, with a focus on Black and Latino communities	Communities of color or underserved populations	Varies	https://www.hfpg.org/what-we-do/our-outcome-areas/thriving-neighborhoods
Rails-to-Trails Conservancy Grants	Funds and technical assistance for developing and expanding trail networks, particularly rail-to-trail conversions.	Projects must promote trail connectivity and public access.	Up to \$50K	https://www.railstotrails.org/grants/



Next Steps

Community Engagement Updates

Pop-up Summary

Ambassador Walk/Handlebar Audits

CTDOT Active Transportation Survey
results

Draft Network

Implementation and Grant Strategies

Next Steps

Next Steps/Actions

- Next Advisory Committee meeting
Wednesday, **December 10, 12-1:30pm**
 - Plan review outline
 - Recommendations
 - Expect a calendar invitation one month prior
- Share slides from today
- **Second Public Meeting (of three)**
 - Virtual | **Tuesday, November 18, 6:30-7:30pm**



Advisory Committee Schedule

January 8,
2025

February
19, 2025

June 2025

October
2025

December
2025

March
2026

Questions?

Shawna Kitzman, Toole Design
skitzman@tooledesign.com

Mike Cipriano, CRCOG
mcipriano@crcogct.gov

